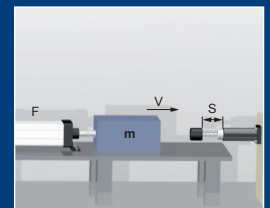


Deceleration cylinder

WM-Z 3



2D / 3D CAD
Download



Benefits

Mounting:

- Vertical with the piston rod down

Temperature:

- Standard: -20°C - +80°C
- Low temperature: -50°C-...+60°C
- High temperature: 0°C-...+120°C

Surface protection:

- Housing: Zinc Plated

RoHS - conform:

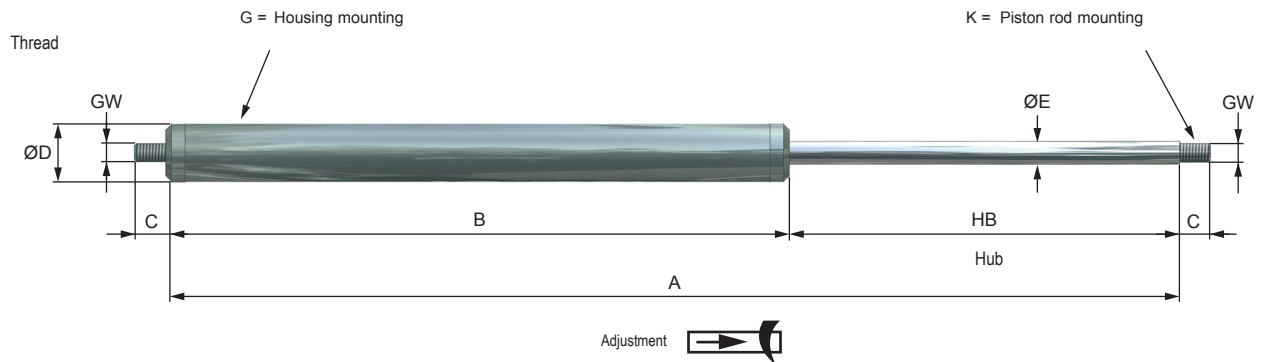
- Directive 2002/95/EC

Design:

- Flexibility relating to Stroke, Deceleration Characteristic

Extended Life Time:

- Special Seals + Oils
- Piston rod hard-chrome plated

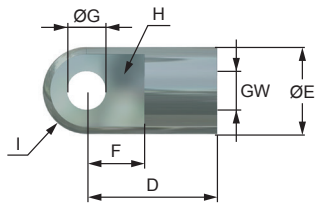


20% of the stroke without deceleration for the standard models (WM-Z).

PERFORMANCE

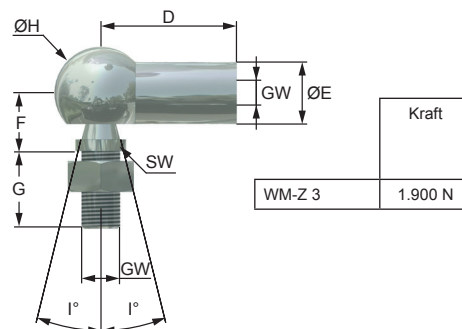
	Stroke	Max. compression force	Standard version Z					GW	Weight (Z)
			A	B	C	ø D	ø E		
WM-Z 3-100	100	10000	275	175	10	35	14	M 10	0,8
WM-Z 3-200	200	10000	475	275	10	35	14	M 10	1,1
WM-Z 3-300	300	10000	675	375	10	35	14	M 10	1,4
WM-Z 3-400	400	10000	875	475	10	35	14	M 10	1,7
WM-Z 3-500	500	8500	1075	575	10	35	14	M 10	2,0

1 Male rod clevis



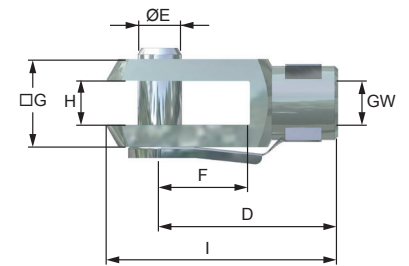
GW*	D	ØE	F	G	H	I
	mm	mm	mm	mm	mm	mm
M 10	27	18	12	8,1	10	9

2 Angle joint (DIN 71802)



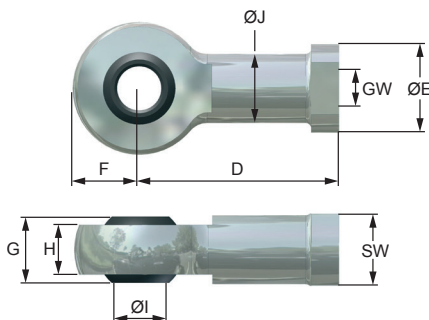
GW*	D	ØE	F	G	H	I	J	SW
	mm	mm	mm	mm	mm	mm	mm	mm
M 10	35	16	16	19	24	-	-	13

3 Female rod clevis (DIN 71752)



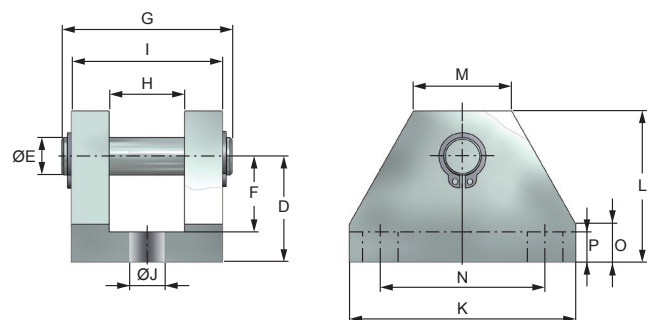
GW*	D	ØE	F	G	H	I
	mm	mm	mm	mm	mm	mm
M 10	40	10	20	20	10	52

4 Spherical end bearing (DIN 648, Series K, Series E on enquiry)



GW*	D	ØE	F	G	H	I	J	SW
	mm	mm	mm	mm	mm	mm	mm	mm
M 10	43	19	14	14	10,5	10	15	17

5 Clevis flange (only use in combination with spherical end bearing (4))



GW*	D	ØE	F	G	H	I	J	SW	K	L	M	N	O	P
	mm	mm	mm	mm	mm	mm	mm	mm	mm	mm	mm	mm	mm	mm
M 10	28	10	20	50	20	40	8,5	-	60	40	26	46	10	8

Ordering Information	
WM-Z 3-100-K3G4-C	
WM	Weforma
Z	Deceleration cylinder (Standard)
3	Diameter: 35 mm
100	Stroke: 100 mm
K3	Piston rod mounting: female rod clevis
G4	Housing mounting: spherical end bearing
C	Typ of deceleration : A= Push, B= Pull, C= Push and Pull

Important information

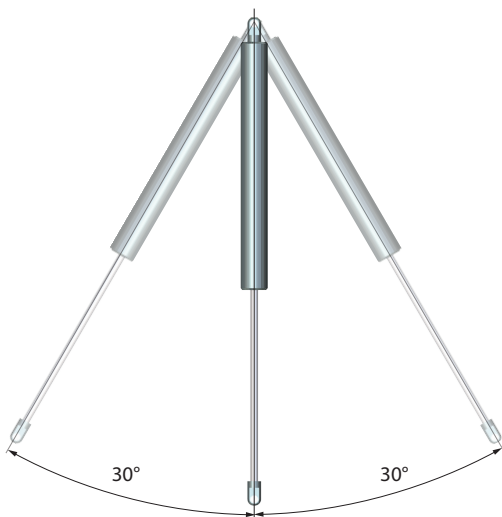
General Information

Shock absorber, deceleration cylinders and speed controls may under no circumstances be welded, painted or provided with clamps.



The products must be protected against contamination, fluids and air pressure. We offer special solutions for these applications. deceleration cylinder should be assembled only with the fixture indicated in the catalogue. When deceleration cylinders are used parallel the size of the model and the used degree of hardness / used adjustment has to be the same. The load has to be distributed equally. Upon the occurrence of vibrations and oscillation a written release by Weforma is required. A fixed stop must be set in the end positions 1 - 1,5 mm before the end of the stroke. 20% of the stroke without deceleration for the WM-Z series.

Mounting: WM-Z vertical,
Deviation: +/-30 from the axis



Adjustment:

Fixation of the piston rod in the extended position adjustment of the deceleration by turning the piston rod clockwise / counter clockwise
soft deceleration = rotating counter-clockwise
hard deceleration = rotating clockwise

Further hardness grades: on enquiry

